



SPD-240L Swimming Pool Dehumidifier.

The SPD-240L Dehumidifier special designed for Industrial & Swimming pool application. It is Ceiling or wall mountable. SPD series dehumidifier consists of high quality compressor. It is provided with external humidistat to set required humidity level. These units can be installed in parallel with main return duct or between supply & return Duct or dedicated return to main supply of main return.



SPD-240L

Power Consumption

2.9 Kilo Watts

Voltage

380V/50 Hz/ 3 Ph

Extraction (30°C, 80% RH)

240 Liters / day

Humidity Setting

Available

Running Temperature

5 - 38°C

Compressor

Hitachi/ Panasonic or equivalent

Refrigerant

R410A

Inlet Duct Size

554 x 604 mm

Filter

G4 Efficiency

Noise

<65 dBA

Dimension (W x D x H) mm

1100 x 900 x 700

Drainage point

Provided

Air Volume

2800 CMH

Weight (kg)

126

IP Rating

IPX21

Outlet Duct Size

554 x 604 mm

Control Technologies FZE

T : +971 6 5489626

M: +971 50 1537113

F : +971 6 5489627

E : sales@ctrltechnologies.com

w : www.ctrltechnologies.com



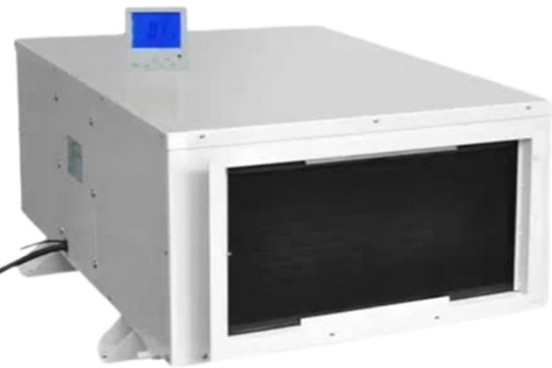
SPD-240L Swimming Pool Dehumidifier.



Ctrltech[®]
Power, Cooling & Monitoring

FEATURES:

- Automatic restart function.
- 1 ~ 24h Timer on / Timer off.
- Automatic defrosting function.
- Washable air filter.
- Overheating protection.
- Temperature and Humidity display.
- Surface electrostatic spray process.



SPD-240L

Control Technologies FZE

T : +971 6 5489626

M: +971 50 1537113

F : +971 6 5489627

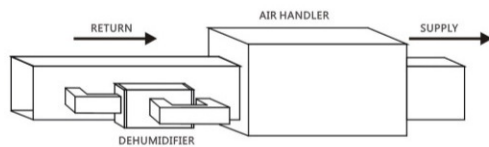
E : sales@ctrltechnologies.com

w : www.ctrltechnologies.com

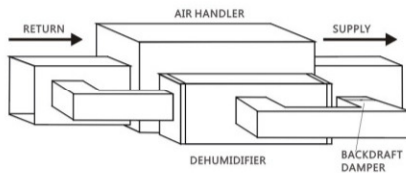


PRODUCT INSTALLATION

A Main Return To Main Return



B Main Return To Main Supply

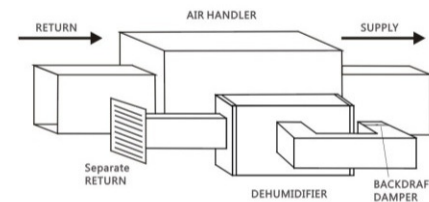


- A** Running it with A/C operation, minimizing the discharge air temperature(DAT) increase is preferred.
- B** Running it opposite A/C operation, meanwhile, running with A/C operation requires deamper on the exhaust port to minimize backdraft when dehumidifier is not on but A/C is.
- C** When drying a specific area of the house, running with A/C operation requires backdraft damper on the exhaust port to minimize backdraft when dehumidifier is not on but A/C is.

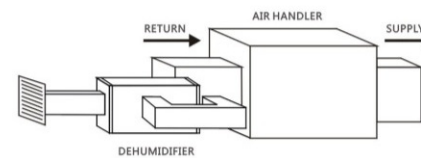
/009

PRODUCT INSTALLATION

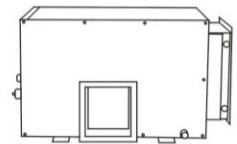
C Dedicated Return To Main Supply



D Dedicated Return To A/C Return



E Uducted



- D** Running it with A/C operation to dry a specific area of the house
- E** Drying a specific conditioned or unconditioned area, such as attic, basement, or crawl space

RYAK / 008

Control Technologies FZE

T : +971 6 5489626

M: +971 50 1537113

F : +971 6 5489627

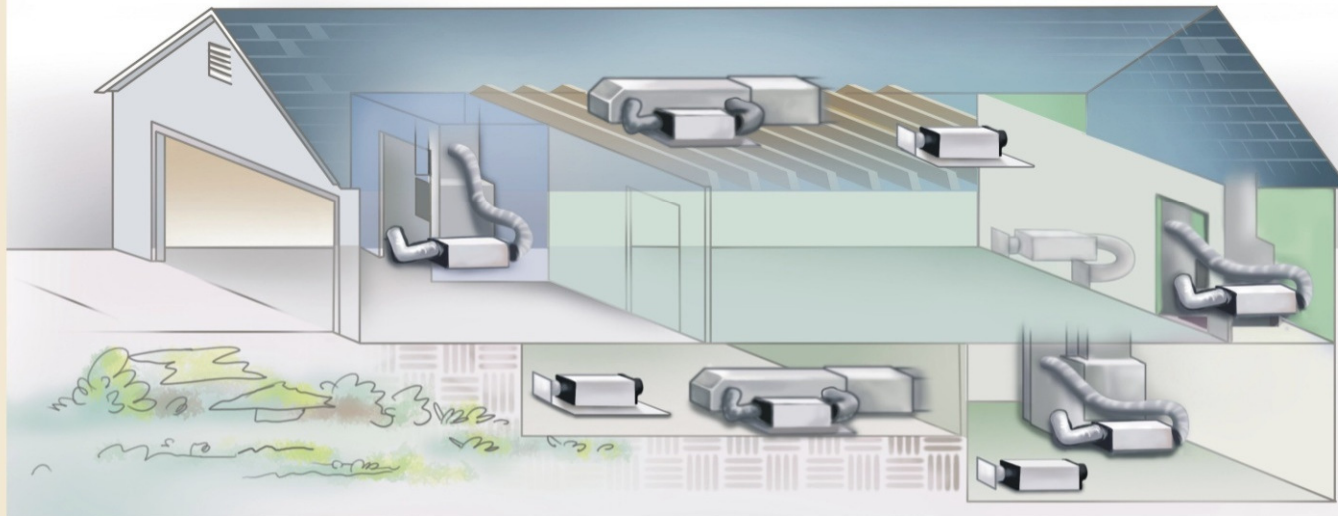
E : sales@ctrltechnologies.com

w : www.ctrltechnologies.com



SPD-240L Swimming Pool Dehumidifier.

YAKE Ceiling/Wall mounted dehumidifier bring the fresh and comfortable air.



Working principle

Utilizing refrigeration and internal air circulation to cool the incoming air stream below its dew point, and the water vapor will be went out through the plate below evaporator. the processed air is reheated by passing through the condenser coil. The heat removed by the evaporator coil is returned to the air stream, resulting in an overall temperature increase to the processed air, so continuous circulation, makes indoor humidity gradually reduce. The ceiling/wall mounted dehumidifier can run with ventilation duct with wind valve, also can be used separately.

Main application

Choosing dehumidifiers depending on indoor space area. While the RH level indoor remains below 60%, there is no sweeter any more, meanwhile, including mildew, peculiar smell, mould contamination etc problems can be well solved too, air quality will be improved, bringing comfort.

WALL MOUNTED DEHUMIDIFIER

/005

/006

Control Technologies FZE

T : +971 6 5489626

M: +971 50 1537113

F : +971 6 5489627

E : sales@ctrltechnologies.com

w : www.ctrltechnologies.com

